

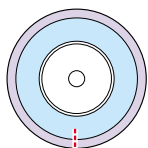
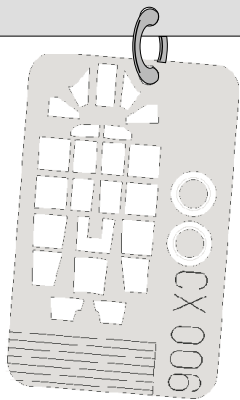
eduard
MASK

A6M5 Zero

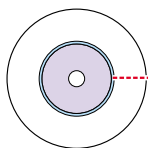
The die-cut mask for accurate canopy frame painting of the
Hasegawa 1/72 KIT

CX 006

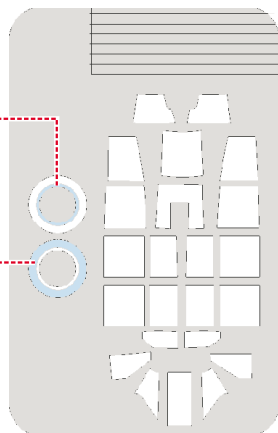
 - LIQUID MASK



?

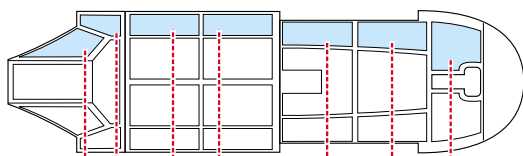


C 25



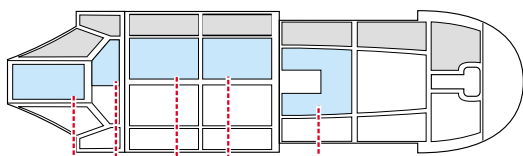
1.)

U 1

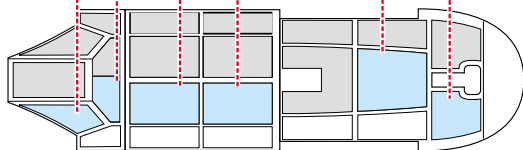


2.)

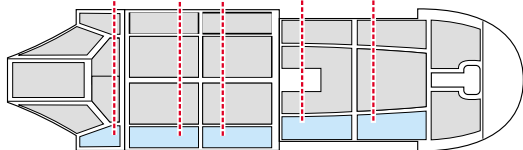
U 1



3.)



4.)



REFERENCES: - THE MARU MECHANIC #1 / 1980
- AERO DETAIL #7